



DR JANINE R BRAIER

D.PSYCH. C.PSYCHOL. AFBPS, MHMA, MNIMH
CONSULTANT CLINICAL PSYCHOLOGIST

PROFILE

A Chartered Clinical Psychologist with more than 30 years' experience in child, adult and family mental health. After qualifying as a Clinical Psychologist and working in NHS teaching hospitals, she spent 15 years as both a research psychologist and psychotherapist, specialising in assessment and psychotherapy with parents experiencing a wide range of difficulties in caring for their children. Her research interest is development of a diagnostic assessment model for parents in Family Proceedings.

SERVICES

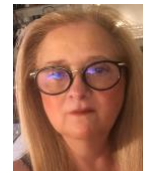
- **Cognitive & Neuropsychological Assessment** (Public)
- **Psychological & strategic support** for individuals caught up in the legal and emotional consequences of difficult or High-Conflict family separation, Domestic Abuse (Private)
- **Couples, Family Therapy & Parenting** including challenging child/adolescent behaviour, trauma & mental health issues (Private)
Please note, not for High-Conflict Clients unless specifically agreed on a case-by-case basis

CONTACT

janine@parentingprofiles.co.uk
<http://www.parentingprofiles.co.uk>

Office: 020 8343 2060
Mobile: 07976 222 555
127 Harley St. LONDON W1G 6AZ

EXPERIENCE



PARENTING PROFILES LTD

1996-Present

CONSULTANT CLINICAL PSYCHOLOGIST/DIRECTOR
Group of Chartered Clinical Psychologists working in Parenting and Child Protection (public). Specialising in assessment, psychotherapy, child & family work.

THE CHELSEA PRACTICE

1990-1996

CONSULTANT PSYCHOLOGIST

Lead Psychologist with special interest in Family Therapy Services including assessment/treatment of Post-Natal Depression & psychopathology within Parent-Child Relationships.

ASHFORD HOSPITAL MIDDX

1988-1990

PRINCIPAL CLINICAL PSYCHOLOGIST

Responsible for Psychology Services to adults & children in Spelthorne district. Special interest in Assessment & Treatment of Obsessive-Compulsive Disorders, Anxiety & Post-Natal Depression.

ST BARTHOLOMEW'S HOSPITAL

1986-1988

SENIOR CLINICAL PSYCHOLOGIST

Responsible for Psychological Research & Assessment of adults in the Stress Research Unit dealing with the impact of stress upon mental health and medical conditions.

CHARING CROSS HOSPITAL

1983-1985

CLINICAL PSYCHOLOGIST

Provision of services to Adult Mental Health and General Medicine, with special interest in Endocrinology.

DR JANINE R BRAIER

D.PSYCH. C.PSYCHOL. AFBPS, MHMA, MNIMH
CONSULTANT CLINICAL PSYCHOLOGIST

EDUCATION

M.Sc. [HERBAL MEDICINE]

UNIVERSITY OF MIDDLESEX

2015-2018

DISTINCTION & DEANS ACADEMIC EXCELLENCE AWARD

D.PSYCH [PSYCHOTHERAPY]

PROFILING PARENTS IN FAMILY PROCEEDINGS

UNIVERSITY OF MIDDLESEX

2006-2010

JENNIFER ELTON WILSON PRIZE

M.Sc. [CLINICAL PSYCHOLOGY]

UNIVERSITY OF SURREY

1980-1982

B.A [PSYCHOLOGY]

UNIVERSITY OF LONDON, GOLDSMITHS

1976-1980

LICENTIATE HOMEOPATHIC MEDICINE

COLLEGE OF PRACTICAL HOMEOPATHY

1998-2000

THERAPY [PERSONAL ANALYTICAL]

WESTMINSTER PASTORAL FOUNDATION

1980-1985

RESEARCH INTERESTS

- Psychological profiling/risk assessment in non-accidental injury & domestic violence, implications for prevention & therapy
- Preparation of Diagnostic Manual and Assessment tool: A Segmentation of Parents with children as subjects of Care Proceedings
- Impact of Substance Misuse on Relationships and Parenting
- Parents with Autistic Spectrum Disorder (ASD): Implications for relationships and childcare
- Profiling/strategies for high-conflict separated families

DR JANINE R BRAIER

D.PSYCH. C.PSYCHOL. AFBPS, MHMA, MNIMH
CONSULTANT CLINICAL PSYCHOLOGIST

PARENTING PROFILES SERVICES

SPECIALIST AREAS: Childhood Trauma, Mental Health, Substance/Alcohol Use, ASD and Intellectual Difficulties, impact on Parenting Capacity including: Emotional & Physical Neglect; Failure to Protect; Emotional, Sexual & Physical Abuse, Non-Accidental injury, Implacable Hostility and Domestic Violence. Clinicians are also involved in current practice, offering psychotherapy services for a variety of psychological difficulties for adults and children.

CLIENT DIAGNOSES: Drug and Alcohol Addiction, depression, post-natal depression, personality disorders, anxiety, intellectual disability, Neurological Disorders, Traumatic Brain Injury, ADHD and Autistic Spectrum Disorders.

COGNITIVE ASSESSMENTS: Intellectual, neuropsychological & ASD assessments at LAA Rates for Solicitors and Local Authorities in Family Proceedings, as well as Private Matters.

REFERRALS: The practice accepts 8-10 New Instructions and Referrals each month from Local Authorities; Child and Family Services; Court; Solicitors; Government Departments; Residential Assessment Units, Family Centres, GP practices, Social Work Teams, Children's Guardians; Individual Clients and their Families.

INDIVIDUAL SUPPORT: Psychological and strategic support is offered to individuals caught up in the legal and emotional consequences of difficult or High-Conflict family separation and domestic abuse. Although often provided for clients involved in Family Proceedings, support will be out of Court and reporting as a Part 25 Expert Witness will not be available as part of this service.

COUPLES & FAMILY THERAPY: Therapeutic mediation is offered to couples. Family therapy and parenting support is also available, including challenging child/adolescent behaviour, trauma & mental health issues. Please note that this is a mental health service, not normally offered for High-Conflict clients in Family Proceedings unless specifically agreed on a case-by-case basis.